



ANALYTICAL SOLUTIONS

CONCENTRATE TABLES

METALLURGICAL

LABORATORY EQUIPMENT

SAMPLING

TURNKEY PROJECTS

PRODUCTIVITY IN MINERALS

CONCENTRATE UPGRADE TABLES

The ST Range of Concentrate Upgrade Tables is designed to allow for the production of smeltable gold concentrate in Gravity Circuits.

- High weight reduction ratio 90:1
- Deck designed for maximum recovery and high concentrate grades
- Chemical free
- High Mechanical availability

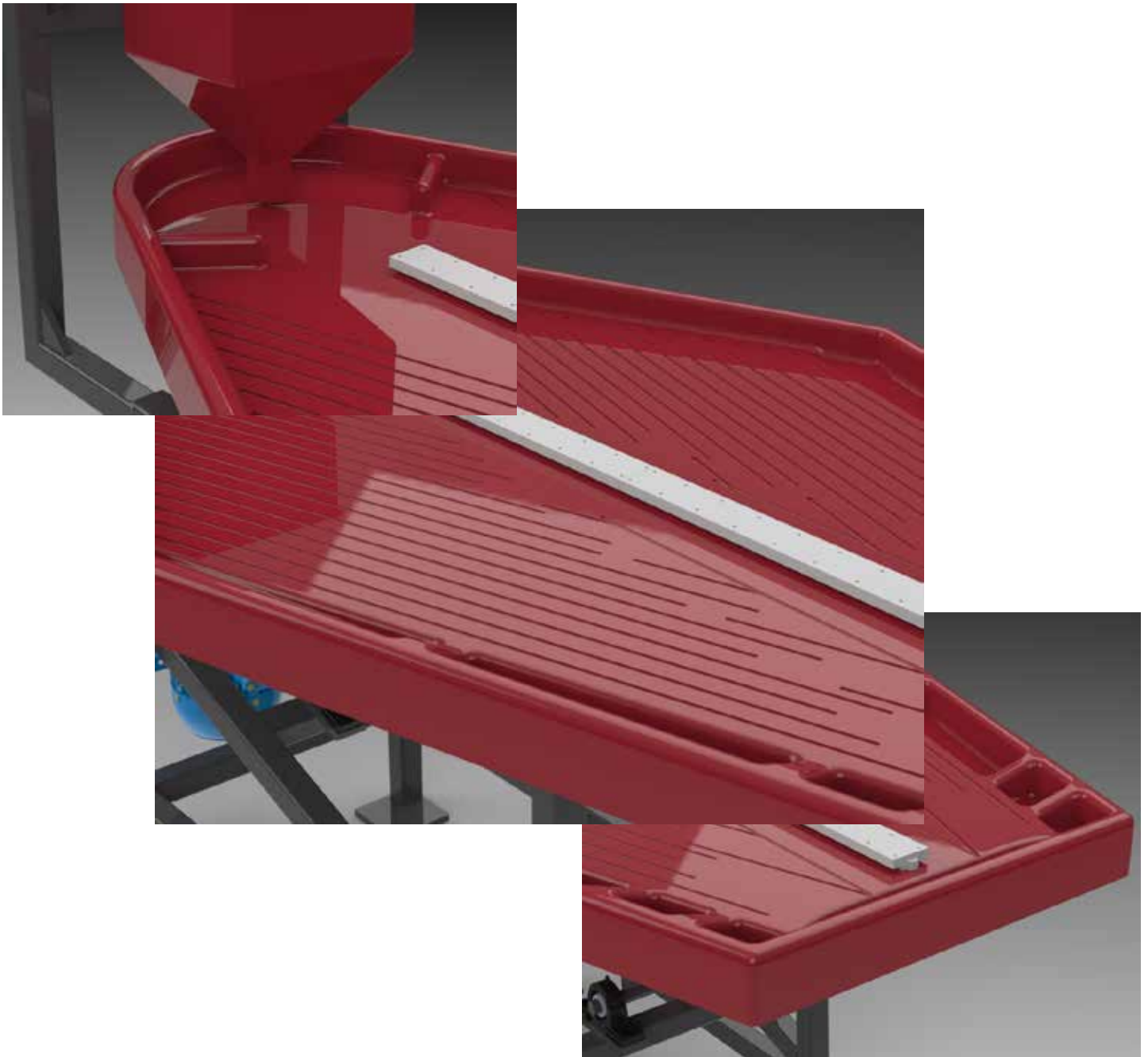


Model	ST30	ST80	ST140	ST300	ST700	ST1200
Feed rate (kg/h)	25 -40	70 -90	135 -150	280-320	680-750	1100 -1300
Water Requirement (l/h)	700	950	1400	1800	2300	3000
Water Pressure (kPa)	30	30	30	30	30	30
Power Requirement (kW)	0.75	0.75	0.75	0.75	0.75	0.75
Shipping Weight (kg)	150	180	200	230	300	500



Some of the important updates to our Tables are as follows:

- Effective area on the decks has been increased, more concentrating area = better efficiency.
- An improved range of sizes. We now offer 6 sizes ranging from 30kg/ hour to over 1200kg/hour.
- Addition of feed guides to prevent short-circuiting of feed to tails in the event of an overfeed situation.



Some more of the important updates to our tables are as follows:

- The decks now mount to the lower frame in such a way that the deck can be levelled even if the bottom frame is not 100% level. No more shims and spacers, or fighting an uneven floor. Just mount the frame as level as possible and then fit and level the deck.
- One can also set up the table motion without the deck in place, with much easier access. Once all the assembly and basic adjustments have been made the deck can be put in place (without hard-to-access bolts) and levelled.
- With the new deck mounting system, the deck can be removed and replaced in seconds.
- Re-positioning of the drive to the feed end of the table making for easier access and maintenance.
- The feed hopper adjustment has also been improved, and the hopper can now be moved forwards and backwards as well as up and down, ensuring that feed is introduced at exactly the right spot.
- The water manifold now has a bank of valves on the side of the table. The manifold itself is a CNC cut part that has a very low profile.



MIT-GROUP

MINERAL INNOVATIVE TECHNOLOGIES



THANK YOU FOR YOUR CONSIDERATION

METALLURGICAL

ANALYTICAL SOLUTIONS

LABORATORY EQUIPMENT

TURNKEY PROJECTS

CONTACT US

Tel: 0861 500 108
Fax: 0866 138 322
Email: info@m-i-t.co.za
Website: www.m-i-t.co.za

SAMPLING

